



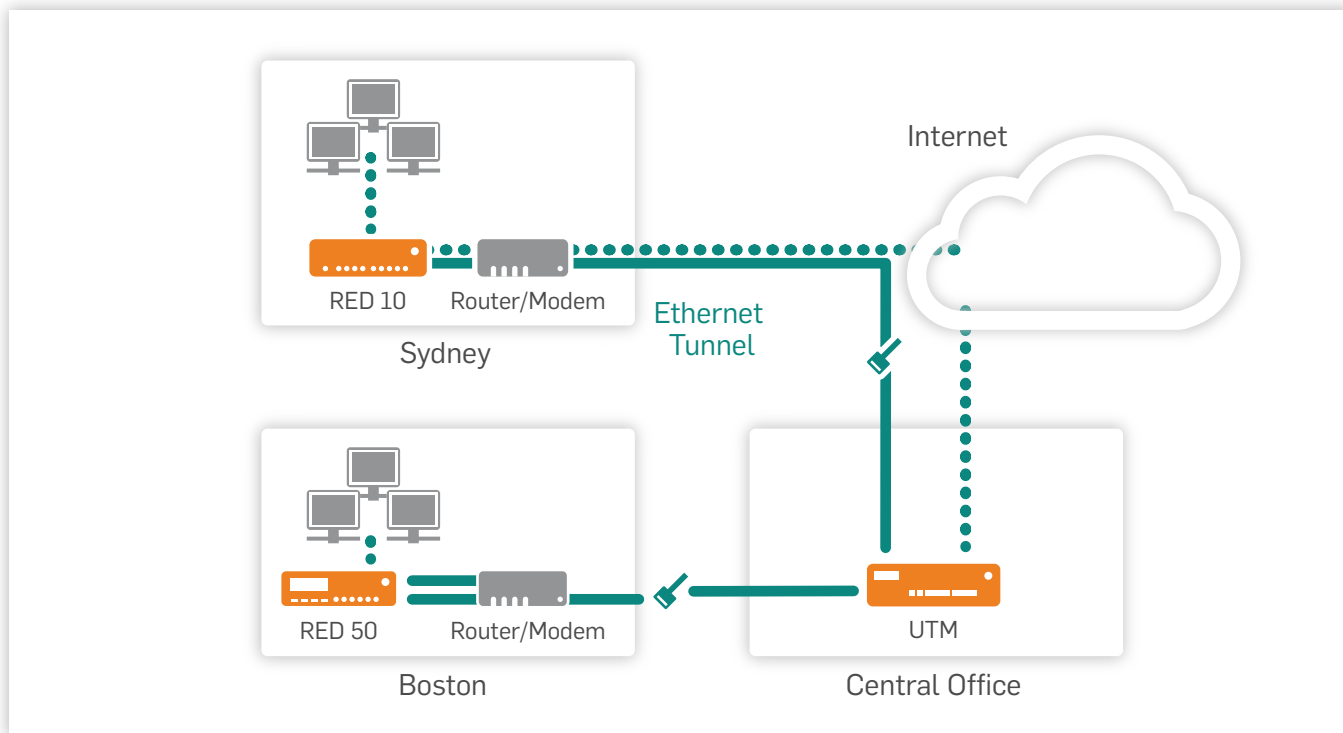
Sophos RED

Securely connects branch offices without local setup

- ▶ **Central management:** Sophos UTM centrally manages your Sophos Remote Ethernet Device (RED) appliances via the cloud.
- ▶ **Configuration-free:** Plug RED into your Internet router and it will automatically connect to your main office.
- ▶ **Encrypted tunnel:** After authentication through digital X.509 certificates, all transferred data is protected using an AES256-encrypted tunnel.
- ▶ **UTM filtering:** Remote sites are fully protected by the UTM Network, Web and Email Protection subscriptions of the central office.
- ▶ **Virtual Ethernet cable:** Reliably transfer all traffic between locations as if they were physically connected like an in-house department.
- ▶ **IP address management:** Centrally define your DHCP and DNS server configuration to roll it out to all sites connected via RED.



If your business has small branch offices, Sophos RED offers you a centrally managed appliance that makes it easy and affordable to connect branch offices back to your headquarters and keep their Internet access secure.



Deployment scenario of Sophos RED

Your Benefits

- ▶ Fast mass roll out, up to 100 appliances per day
- ▶ No local IT knowledge required at the remote site
- ▶ Reduce total cost of ownership (TCO) by more than 80%
- ▶ No maintenance and no recurring costs for branch offices
- ▶ Strong UTM security
- ▶ Only one global security policy required
- ▶ Extend wireless coverage throughout the company by adding Sophos Access Points

“Treating my off-site locations as if they were just another department in house is a brilliant idea.”

Mario Techel, CEO, Cobotec

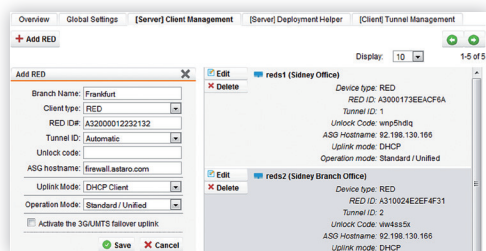
Technical Specifications

Central Sophos UTM appliance	UTM 110/120	UTM 220	UTM 320	UTM 425	UTM 525	UTM 625
Recommended sizing						
Number of RED appliances	10	20	40	80	90	150
Maximum RED throughput	50 Mbps	80 Mbps	120 Mbps	240 Mbps	280 Mbps	360 Mbps
Required subscriptions	UTM Network Protection					

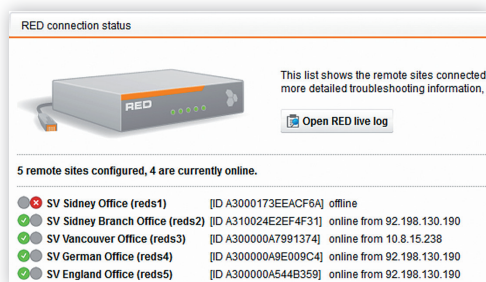
RED appliance	RED 10	RED 50
Capacity		
Maximum users	Unrestricted	Unrestricted
Maximum throughput	30 Mbps	360 Mbps
Physical interfaces		
LAN interfaces	4 x 10/100 Base-TX	4 x 10/100/1000 Base-TX
WAN interfaces	1 x 10/100 Base-TX	2 x 10/100/1000 Base-TX
USB interfaces	1 x USB 2.0 (rev.2 or higher)	2 x USB 2.0
Serial console	–	1 x RJ45 console
LED display	Power, system, router, Internet, tunnel, 4 x LAN, WAN	Power, error, 4 x LAN, 2 x WAN
Power supply	110-240 V, 50-60 Hz, max. 1 A	100-240 V, 50-60 Hz, 1.3 A
Physical specifications		
Chassis	Heavy-duty steel	Heavy-duty steel
Mounting	Desktop	Desktop/wall/rack (optional)
Dimensions (W x H x D)	155 x 30 x 117 mm	216 x 44 x 189 mm
Weight	510 g / 1.12 lbs	1.1 kg / 2.43 lbs
Power consumption	< 7 W	38.2 W (max.)
Temperature	0-40°C (operating), -20-65°C (storage)	0-40°C (operating), -20-70°C (storage)
Humidity	10-85% (operating), 5-95% (storage), non-condensing	5-90% (operating), 5-95% (storage), non-condensing
Safety regulations		
Certifications	CE, FCC Class B, VCCI, C-Tick	CE, FCC Class A, VCCI, C-Tick, UL



User Interface



Configuration of RED devices



List of RED devices

Interface	Name	Type	State	Link	In	Out
all	All Interfaces				149.7 kbit	19.4 kbit
eth0	Internal	Ethernet	Up	Up	14.2 kbit	13.4 kbit
eth1	Public_External	Ethernet	Up	Up	77.2 kbit	3.7 kbit
eth2	unused					
reds2	Sidney Branch Office	Ethernet	Up	Up	44.1 kbit	0.6 kbit
reds3	Vancouver Office	Cable Modem	Down	Down	13.1 kbit	0.6 kbit
reds4	German Office	Ethernet	Up	Up	0.5 kbit	0.6 kbit
reds5	England Office	Ethernet	Up	Up	0.5 kbit	0.6 kbit

Dashboard integration

Add-ons

Every company's network and operating mode is different. We provide you with a number of add-ons you can select and combine to suit your needs.

Essential Network Firewall

Offers basic security functions to help protect your business network.

UTM Network Protection

Protects against sophisticated types of malware, worms and hacker exploits that can evade your basic firewall.

UTM Email Protection

Secures your corporate email from spam and viruses while protecting sensitive information from cybercriminals.

UTM Web Protection

Protects your employees from web threats while controlling how they spend time online.

UTM Webserver Protection

Protects your web servers and applications like Outlook Web Access (OWA) from modern hacker attacks.

UTM Endpoint Protection

Manages and protects endpoints at any location against data loss with a centrally deployed security agent.

UTM Wireless Protection

Dramatically simplifies the operation of secure and reliable wireless networks.

Try it now for free

Register for a free 30-day evaluation at sophos.com/try-utm

United Kingdom Sales:
Tel: +44 (0)8447 671131
Email: sales@sophos.com

North American Sales:
Toll Free: 1-866-866-2802
Email: nasales@sophos.com

Australia & New Zealand Sales
Tel: +61 2 9409 9100
Email: sales@sophos.com.au

Boston, USA | Oxford, UK
© Copyright 2012. Sophos Ltd. All rights reserved.
All trademarks are the property of their respective owners.

Sophos Data Sheet 2.12v1.dNA